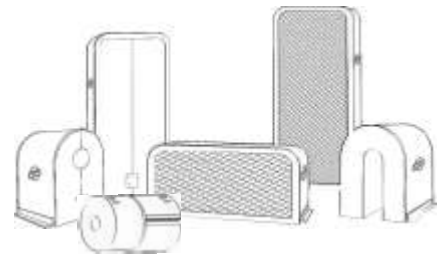
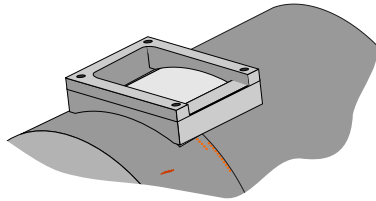




Engineered for Safety!

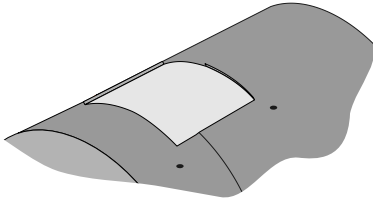


Instruction for mounting Uniguard Inspection Window on Barrel Style Guards

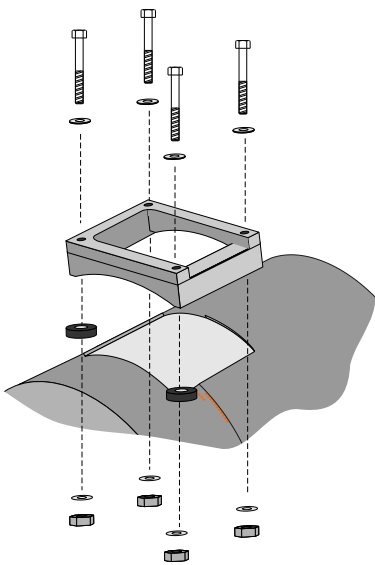
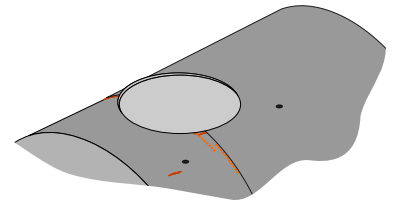


Guards should be mounted and adjusted to proper width before installing Inspection Window.

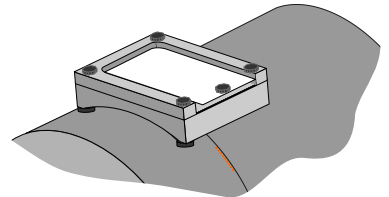
Note: Once the Inspection Window is installed the guard will no longer be adjustable. Position Window on guard, directly over coupling location and mark for opening and bolt-hole location.



Opening should be cut with a reciprocating saw with a coarse blade or alternately a large hole saw, roughly the diameter of the window opening may be used.



Secure window frame to guard body with provided fasteners. Two neoprene washers are provided to be used as spacers should position of window frame straddle adjustment seam on barrel of guard. Once Frame has been secured to guard slide window into place and secure with supplied fastener.



Call for More Information
Phone: 336-665-0250
www.uniguardmgc.com

#IM- 459166

