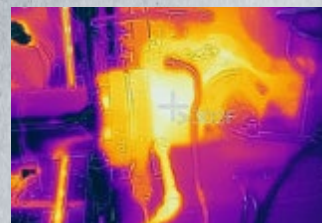


BOILER FEEDWATER PUMP PROTECTION KIT

Proven Components Configured to Prevent Contamination and Bearing Failure



This actual infrared image from one plant shows how tough the environment can be for boiler pumps.

In the hot, harsh environments where boilers help produce power, the threat of water and dirt ingress into boiler feed pumps is undeniable. So how do you protect this critical equipment? Close every possible pathway for the contamination that causes bearing failure, and filter out the rest. That's exactly what this kit is designed to do, while still allowing the pressure equalization that the equipment

requires. Your technicians can install the setup easily – a simple, low-cost solution to the high-cost problems of repairs, replacements and unplanned downtime.

Learn more about the Trico setup by clicking on the graphic. Questions? Contact inquiries@tricocorp.com or call us at 800-558-7008.

Not Sure What Solutions You Need? Start with a Sample Analysis.

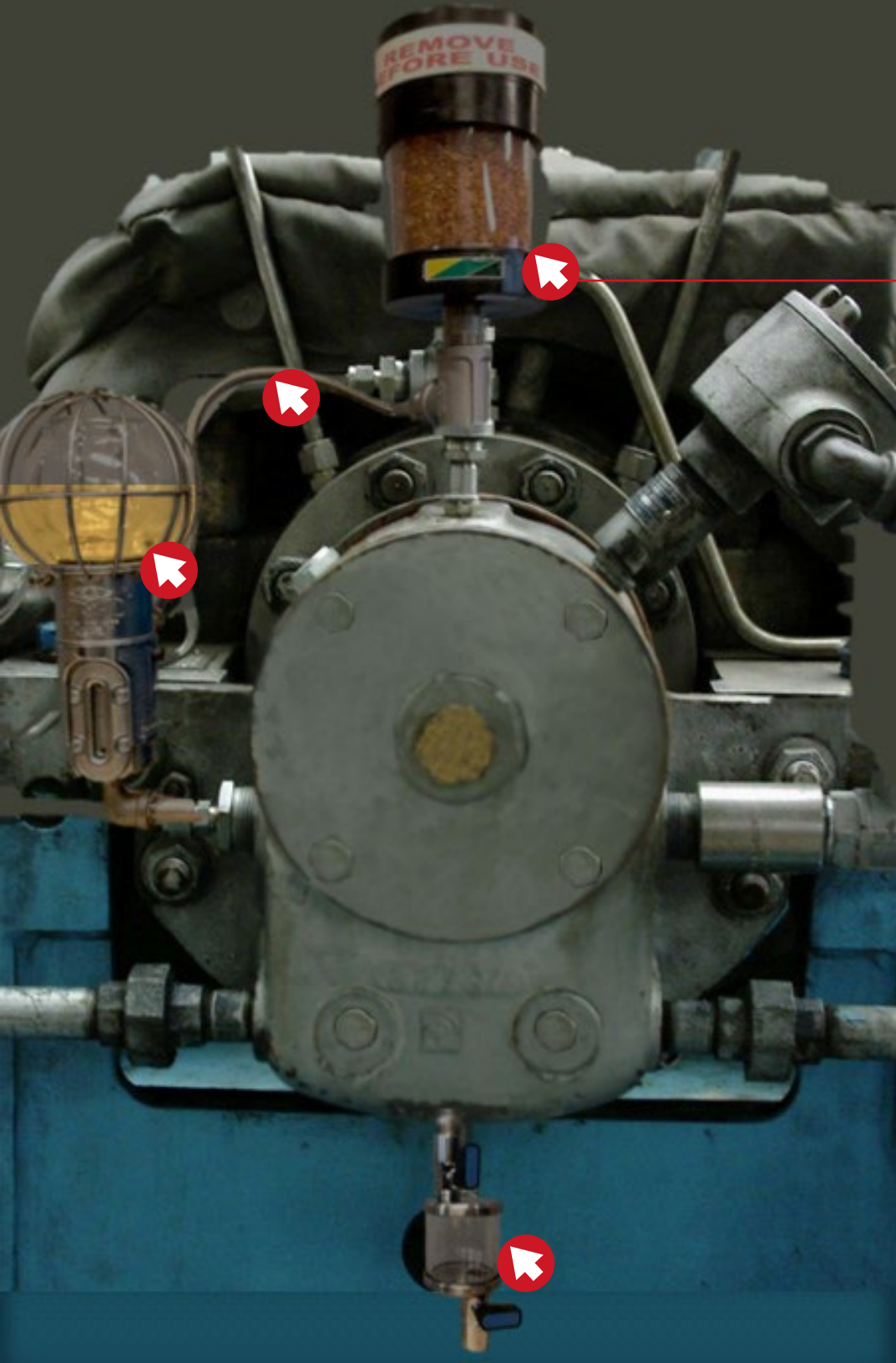
Oil sampling data can help zero in on an issue – especially if you go deeper than typical oil analysis services. Experience the difference with a complimentary oil sample analysis from Trico. We'll help you figure your problem out. [Learn more.](#)



Corporate Office • 1235 Hickory Street • Pewaukee, WI 53072

p: 262.691.9336 • f: 262.691.2576

©Trico Corporation 2018 All Rights Reserved.



Desiccant Breather

Filters out moisture and particulates to provide clean, dry air when pressure balancing is necessary in the bearing housing.

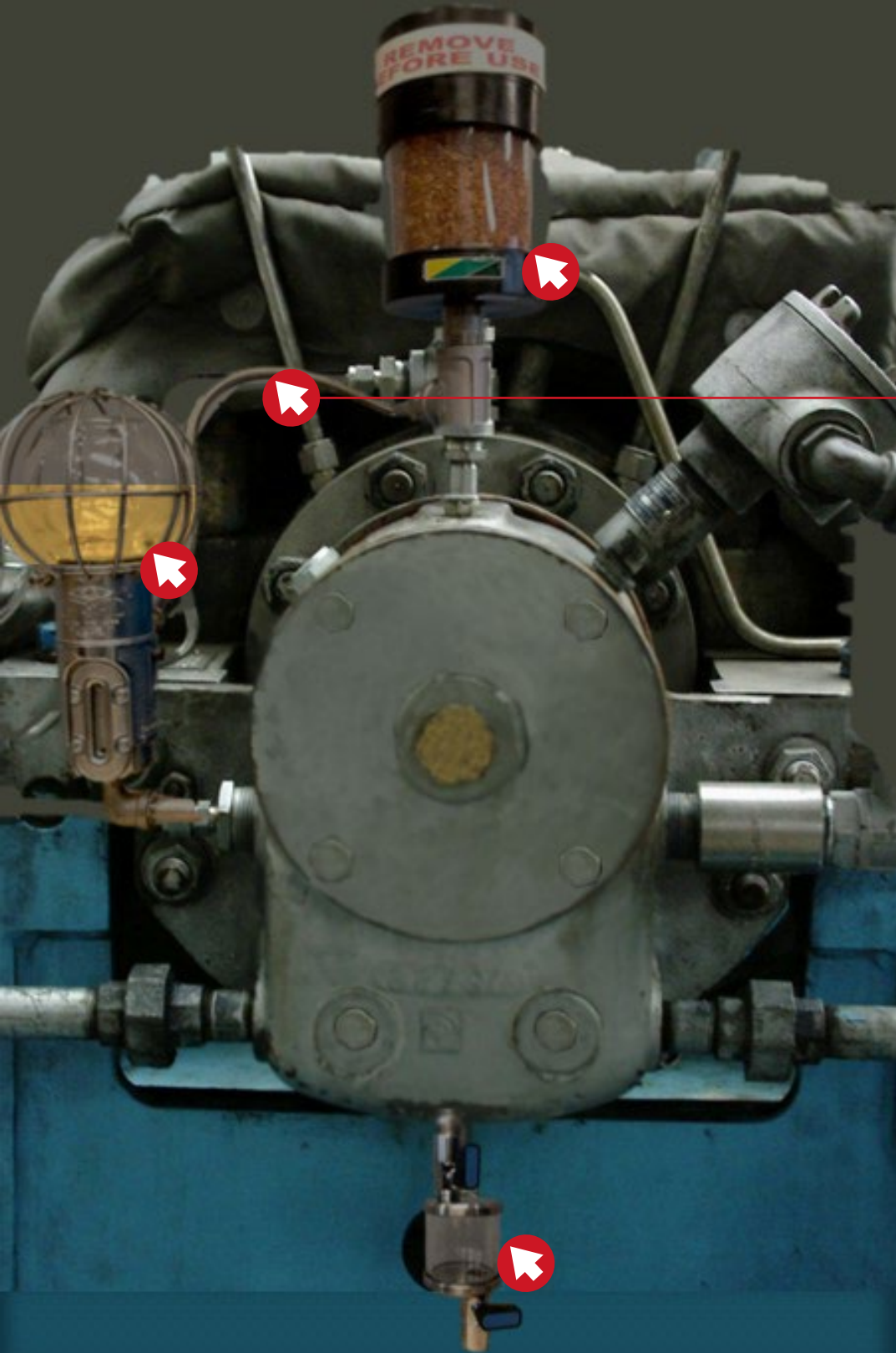
Item #	Description	Qty
40408	Closed System Set-up 8 oz. Oiler & EX Breather & Pressure Balancing Line	1
15-00325	5 oz. Sump Bottle 1/2 NPT & Ball Valve	1
11146	Ball Valve, 1/2" NPT (optional)	1
39217	Replacement Cartridge EX Desiccant Breather	1



Corporate Office • 1235 Hickory Street • Pewaukee, WI 53072

p: 262.691.9336 • f: 262.691.2576

©Trico Corporation 2016 All Rights Reserved.



Pressure Balancing Line

Equalizes air pressure between the bearing housing and the oiler, eliminating the need for other breathers or vents that allow contaminant ingress.

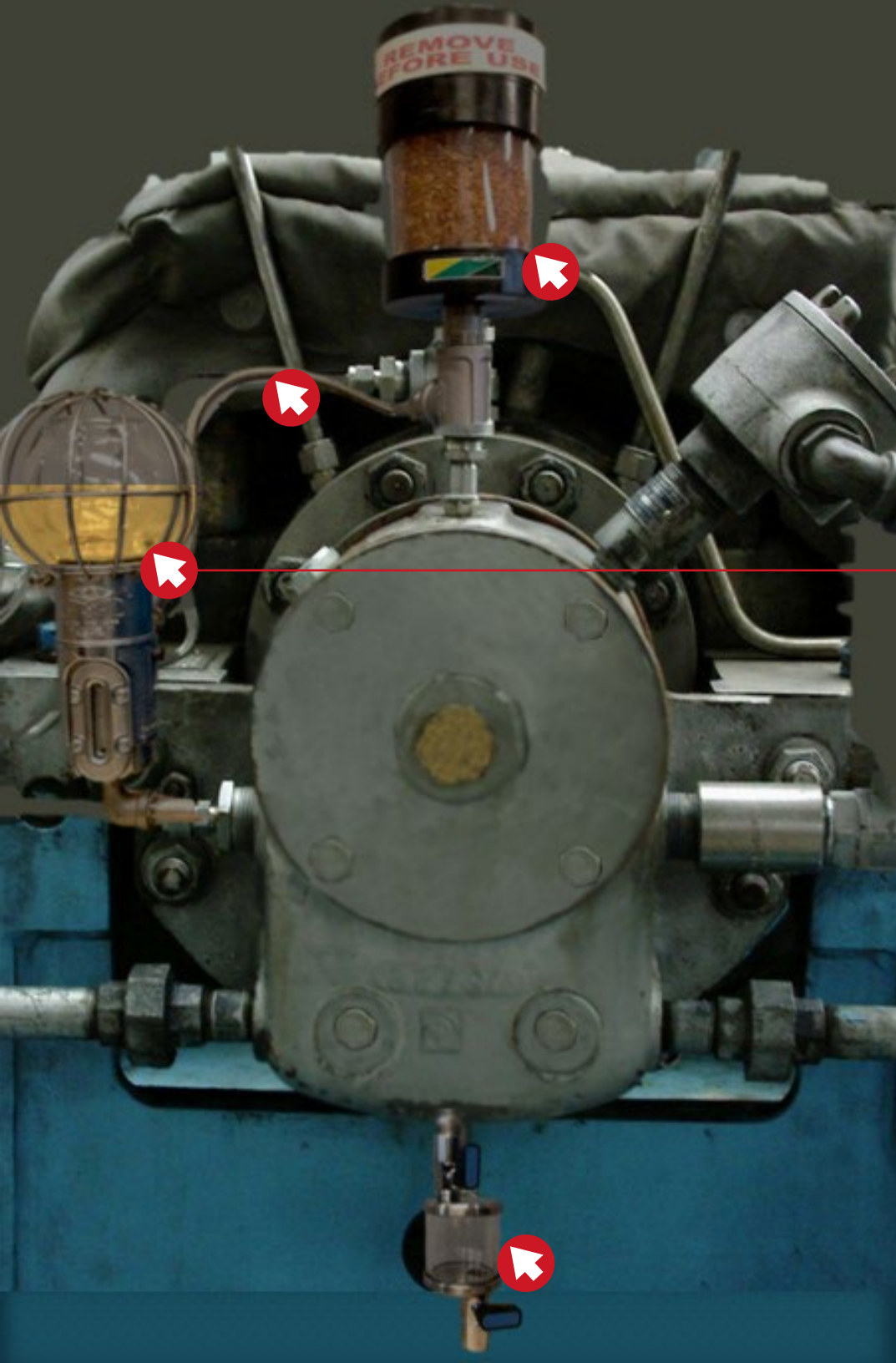
Item #	Description	Qty
40408	Closed System Set-up 8 oz. Oiler & EX Breather & Pressure Balancing Line	1
15-00325	5 oz. Sump Bottle 1/2 NPT & Ball Valve	1
11146	Ball Valve, 1/2" NPT (optional)	1
39217	Replacement Cartridge EX Desiccant Breather	1



Corporate Office • 1235 Hickory Street • Pewaukee, WI 53072

p: 262.691.9336 • f: 262.691.2576

©Trico Corporation 2016 All Rights Reserved.



Closed System Oiler

Ensures that clean, dry oil is always available, offsetting oil loss due to use, leaks or sampling.

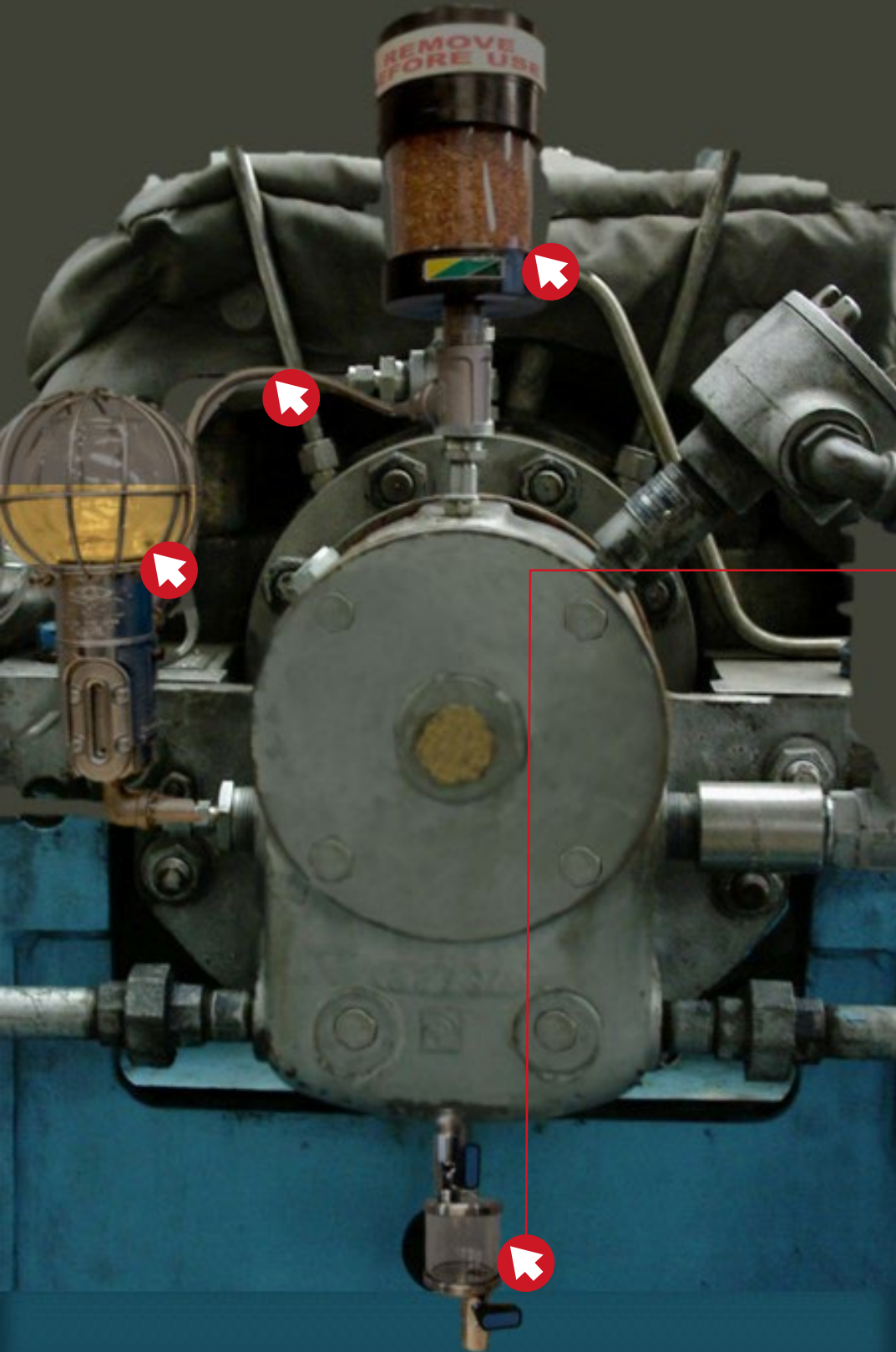
Item #	Description	Qty
40408	Closed System Set-up 8 oz. Oiler & EX Breather & Pressure Balancing Line	1
15-00325	5 oz. Sump Bottle 1/2 NPT & Ball Valve	1
11146	Ball Valve, 1/2" NPT (optional)	1
39217	Replacement Cartridge EX Desiccant Breather	1



Corporate Office • 1235 Hickory Street • Pewaukee, WI 53072

p: 262.691.9336 • f: 262.691.2576

©Trico Corporation 2016 All Rights Reserved.



Bottom Sediment & Water (BS&W) Bowl

Allows particulate and water to collect at the bottom for easy removal. Includes a viewport to check oil condition as well as an effective sampling location.

Item #	Description	Qty
40408	Closed System Set-up 8 oz. Oiler & EX Breather & Braided Line	1
15-00325	5 oz. Sump Bottle 1/2 NPT & Ball Valve	1
11146	Ball Valve, 1/2" NPT (optional)	1
39217	Replacement Cartridge EX Desiccant Breather	1



Corporate Office • 1235 Hickory Street • Pewaukee, WI 53072

p: 262.691.9336 • f: 262.691.2576

©Trico Corporation 2016 All Rights Reserved.